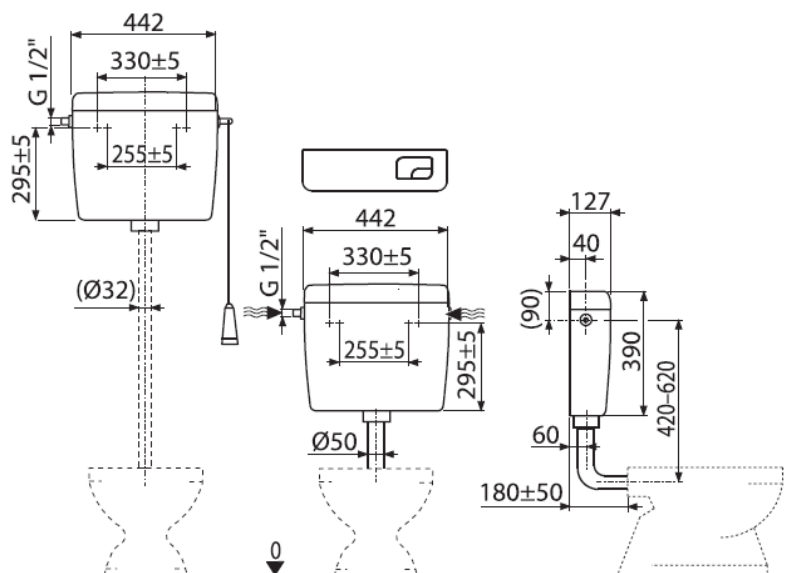


## Exposed cistern Easybox *Dual*



### Field of application

- Exposed installation
- Low/medium/high level installation

### Features

- Exposed cistern with anti-condensation insulation
- 8 l. flush volume adjustable
- Universal connections
- Side water inlet (left or right)
- Dual flush 3/6 l.

### Tecnical data

- Total flush volume Lt 6-8
- Short flush volume Lt 2,5
- Noie range <30dB
- Operation Dual flush  
(single flush for high level installation)

### Contents t

- Fixing kit
- High level installation kit (twine, lever, knob)

### Item

19.02 Easybox dual