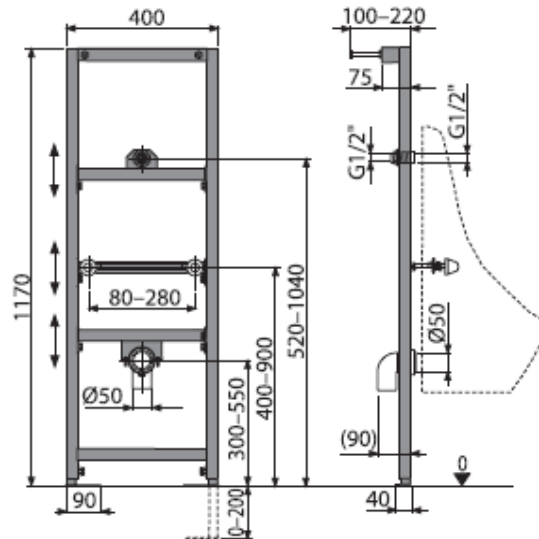


Module for urinal



Field of application

- Wall hung urinals
- Light wall and pre-wall installation

Features

- Adjustable crossbars
- Adjustable telescopic supports (0-200mm)
- Adjustable urinal fixings (80-280mm)
- Powder coated steel frame

Technical data

- | | |
|--------------|---------------|
| ○ Load test | Kg 150 |
| ○ weight | Kg 8.75 |
| ○ Dimensions | 1195x82x410mm |

Item

20.19/O IDEALITE module for urinal